

Centre for Distance and Online Education

Himachal Pradesh University, Shimla

Annual Report of Students Feedback 2023-24

1. Preface

The feedback of the various stakeholders plays a pivotal role in the development of the university. Center for Distance and Online Education, Himachal Pradesh University, Shimla has collected feedback on curricular and co-curricular aspects so that the corrective actions could be incorporated well on time. The feedback is obtained from Students. After the compilation of all responses the report is placed before the Internal Centre for Internal Quality Assurance to lay down the action strategies for the suggestions given by stakeholder.

2. Objectives of Feedback Process

- To determine the gap analysis of the programme.
- To ascertain the need for the revision of the course content.
- To develop the syllabus as per industrial and societal needs.
- To strengthen the curriculum as per recent advances in technology.
- To incorporate the courses having focus on employability, entrepreneurship and skill development.

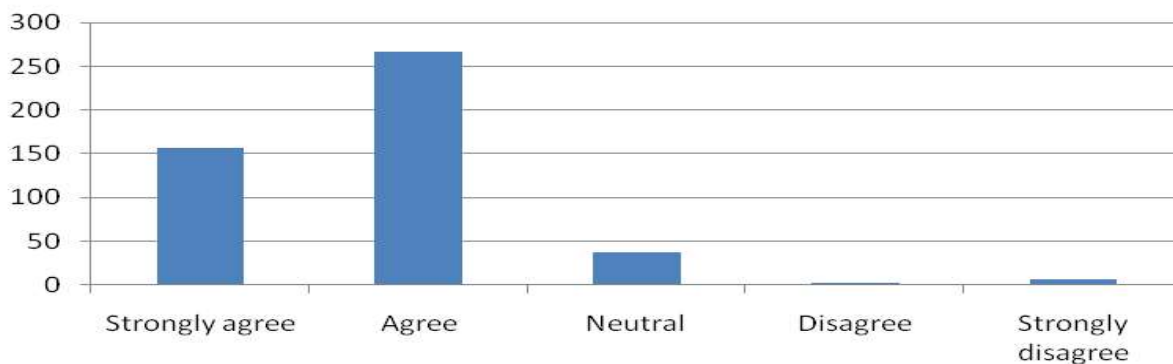
3. Feedback Analysis

Centre for Distance and Online Education, Himachal Pradesh University has collected feedback of students in 2023-24, a total of 474 feedbacks were taken from students on different aspects of course objective, course outcomes, study material, elective courses, and usefulness of curriculum towards research, innovation, skill development, employability and introduction of new courses. Analysis of the student's feedback is depicted with the help of Tables and Figures.

Responses received from students for academic (Session 2023-24)

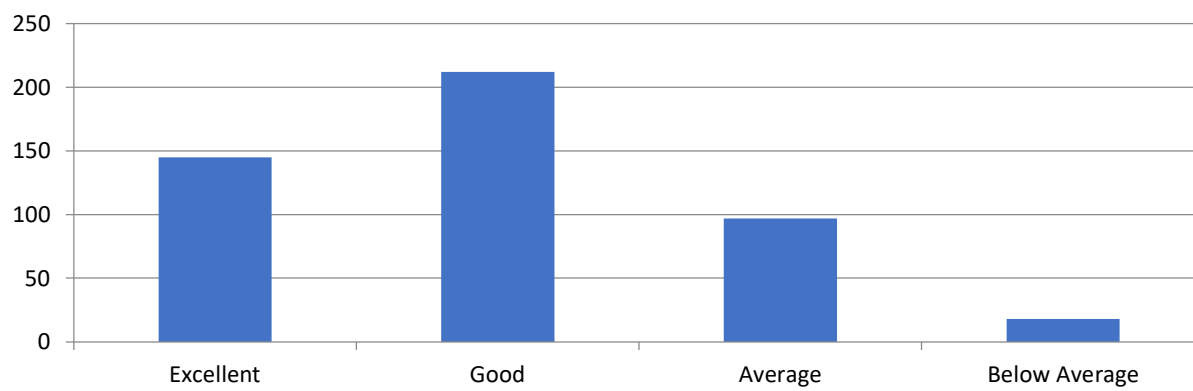
Total number of responses =474						
S.No.	Particulars	Strongly agree	Agree	Neutral	Disagree	Strongly disagree
1.	The Course objectives and outcomes were clearly defined/ identified	157	267	38	3	7

1 The Course objectives and outcomes were clearly defined/ identified



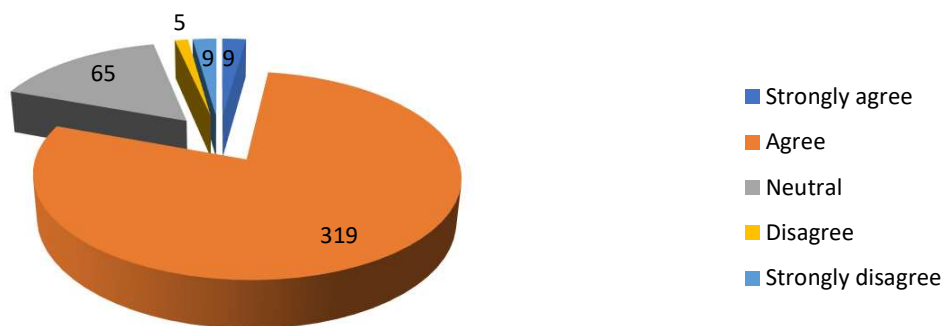
S.No.	Particulars	Excellent	Good	Average	Below Average
2.	The books prescribed/ listed as reference materials are relevant, updated and appropriate	145	212	97	18

2 .The books prescribed/ listed as reference materials are relevant, updated and appropriate



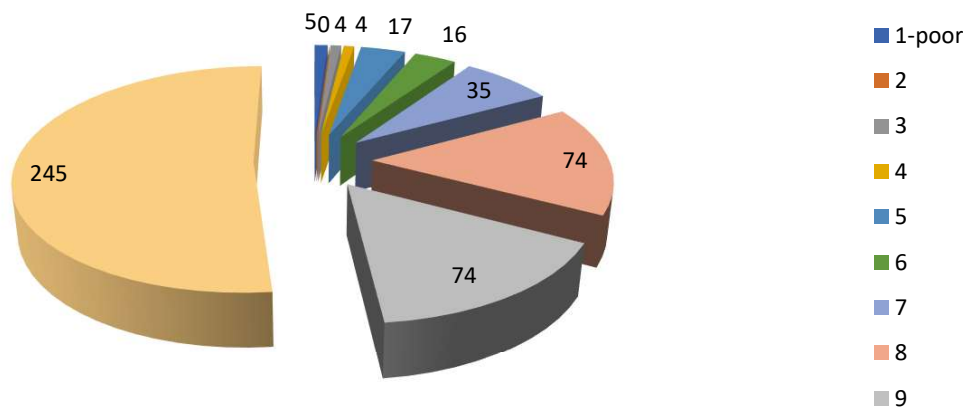
S.No.	Particulars	Strongly agree	Agree	Neutral	Disagree	Strongly disagree
3.	The program of studies carries sufficient number of elective (optional) papers	09	319	65	5	9

3.The program of studies carries sufficient number of elective (optional) papers



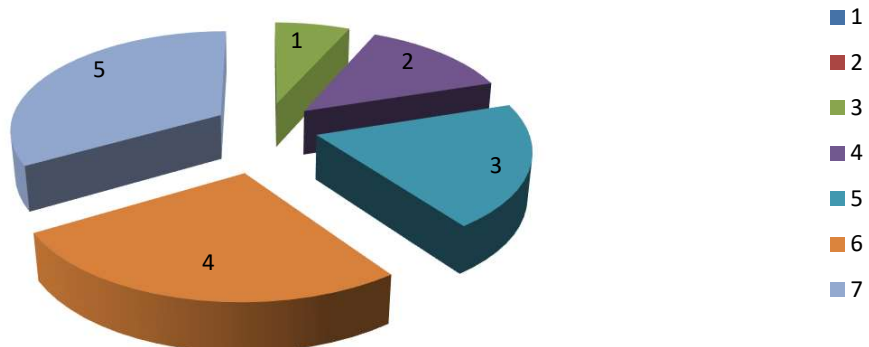
S.No.	Particulars	1- poor	2	3	4	5	6	7	8	9	10- Excell ent
4.	Rate the Quality of lecture delivery	5	0	4	4	17	16	35	74	74	245

4.Rate the Quality of lecture delivery



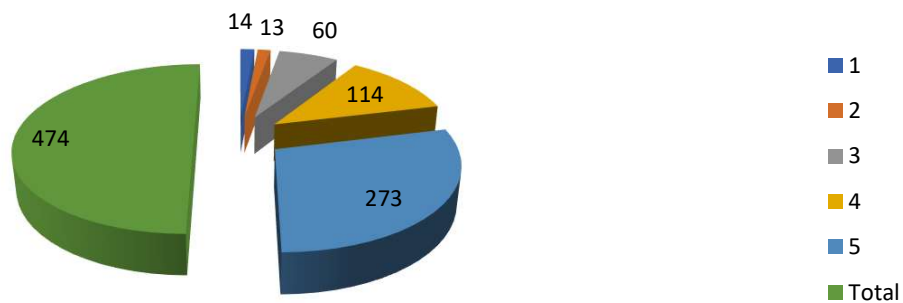
S.No.	Particulars	1	2	3	4	5
5.	The lecture in class was well-structured and coordinated.	7	7	39	115	306

The lecture in class was and coordinated.



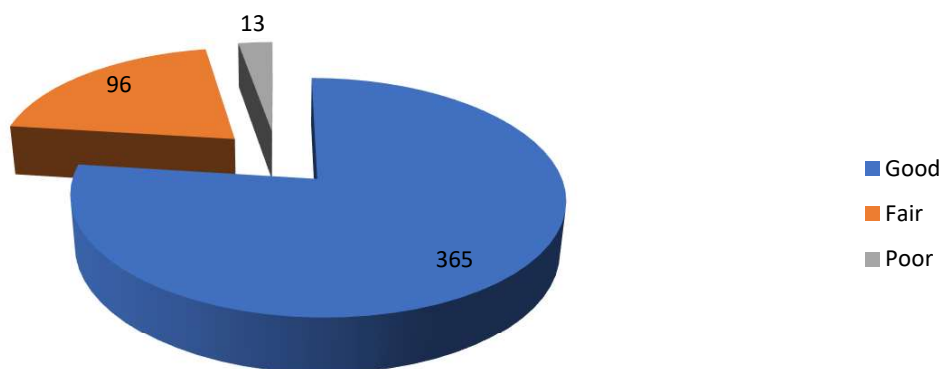
S.No.	Particulars	1-poor	2	3	4	5
6.	The learning materials were readily available.	14	13	60	114	273

6.The learning materials were readily available.



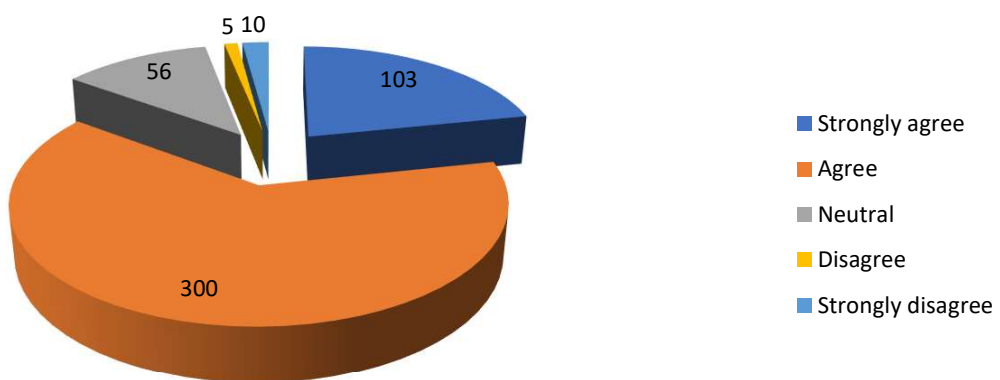
S.No.	Particulars	Good	Fair	Poor
7.	Quality of Study Material Provided to you was	365	96	13

7. Quality of Study Material Provided to you was



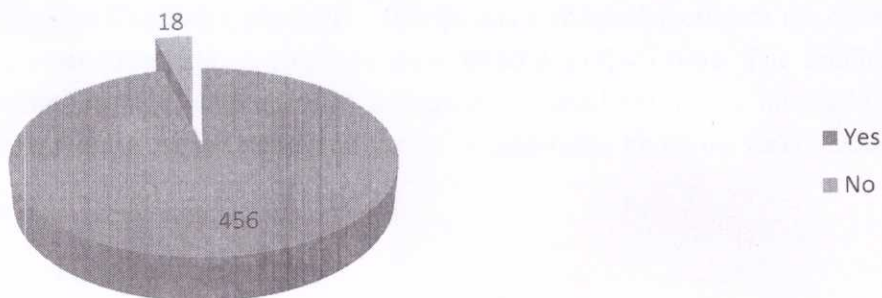
S.No.	Particulars	Strongly agree	Agree	Neutral	Disagree	Strongly disagree
8.	Grievances are resolved effectively within the time	103	300	56	5	10

8. Grievances are resolved effectively within the time



S.No.	Particulars	Yes	No
9.	Grievances are resolved effectively within the time	456	18

9. Information related to Registration, Examination, Result Declaration, Practical and all other academic activities are available on university website within the time.



4. Conclusion:

The feedbacks obtained from students in 2023-24, were analyzed. A meeting of Internal CIQA was organized to assess the compiled feedbacks received from students.

Sanjiv K.
CDOE
Director

Director
ICDEOL
Himachal Pradesh University
Shimla-171005